

COMPANY PROFILE

2025 GENERAL OVERVIEW



ABOUT US

EUTECH is an engineering company providing innovative and intelligent solutions. It manages all stages of industrial projects, from SCADA systems to product development. With its expert team, it handles everything from field installation to commissioning, ensuring a seamless process. With its internationally recognized certifications and technical expertise, EUTECH delivers projects that comply with the highest quality and safety standards.



JANUARY 2018



LNG & NATURAL GAS



ISTANBUL



**1 Master's Degree,
10 Associate Degree,
8 Bachelor's Degree**



5 COUNTRIES

OUR VALUES



QUALITY

In an era where price competition often dominates, quality is and will always be the cornerstone of Eutech's principles. Our ultimate goal is to stand out through an unwavering commitment to quality in a competitive market.



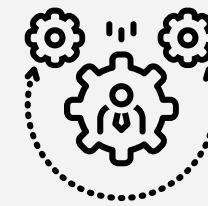
RELIABILITY

Trust is a core value at Eutech. We operate with trust at the forefront, fostering long-term partnerships.



ENVIRONMENTAL INITIATIVES

At Eutech, environmental stewardship is our priority. We are dedicated to preserving nature by focusing on energy efficiency, enhanced recycling, and proactive sustainability advocacy for the well-being of future generations and the planet.



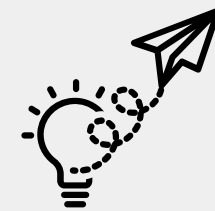
DYNAMISM

In today's fast-paced world, time has become one of the most crucial aspects of work life. Eutech enhances its dynamism day by day, providing swift solutions to its partner companies through collaboration and aiming to save time.



CUSTOMER-CENTRIC APPROACH

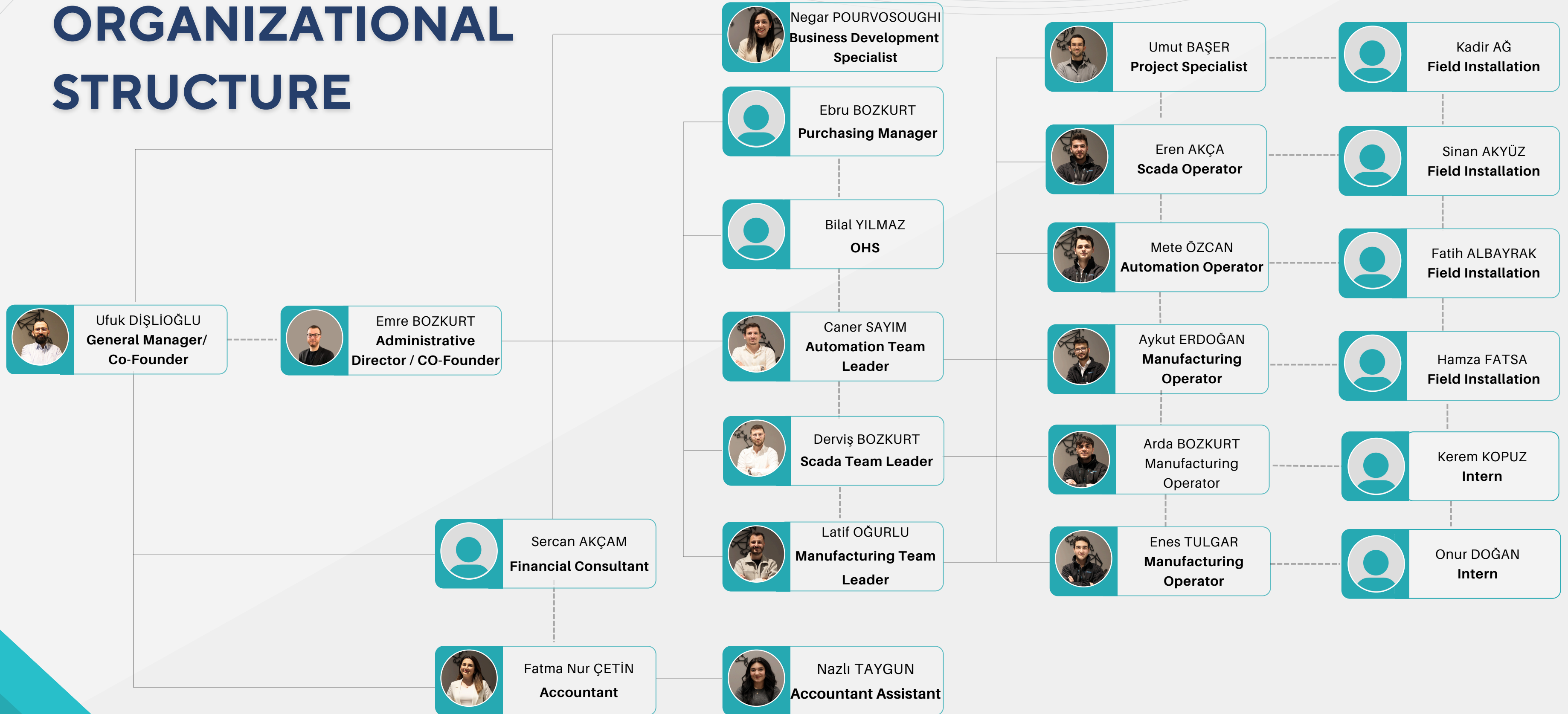
Eutech tailors its processes to meet customer needs. We consider any task without 100% customer satisfaction as incomplete.



INNOVATION

With a vision to lead its industry, Eutech pioneers innovation-driven R&D by keeping pace with emerging global trends.

ORGANIZATIONAL STRUCTURE



OFFICIAL CERTIFICATES



EUTECH'S TIMELINE

2018



Establishment

Eutech was founded by Emre BOZKURT and Ufuk DİŞLİOĞLU in January 2018.

2019



First RMS Agreement

The **first turnkey RMS-A** station was commissioned. Eutech became the **exclusive authorized distributor for the Karf & Scoot** brand in the industry.

2020



Growth in Manufacturing

Despite the challenges of the pandemic, Eutech successfully **produced a substantial volume of panel sets for RMS-A stations**, meeting industry demands and playing a key role in the standardization of projects and panels.

2021



Sectoral Collaborations

Eutech established strategic collaborations with leading industry brands, including **RFLO, Dräger, Pepperl+Fuchs, and Inform**, fostering innovation and excellence in the sector.

2022



Relocation to IMES and Partnership

Eutech has relocated to IMES, expanding its business capacity and **strengthening its organizational structure**. This move has marked significant progress in institutional development and departmental growth. Additionally, **Eutech has become a certified partner of Schneider EcoXpert**, further enhancing its expertise and industry presence.

2023



Expansion into International Markets

In January 2023, Eutech expanded its global presence by establishing **Eutech Polska** and successfully commissioning its **first international RMS project in Tashkent**. Additionally, the company has strengthened its collaborations with global partners, further enhancing its international reach and impact.

2024



Fairs and R&D activities

Leveraging the knowledge and experience acquired from international fairs and conferences in energy, commercial measurement, digitalization, and artificial intelligence, Eutech **launched its first TÜBİTAK-supported R&D and software projects**.

2025

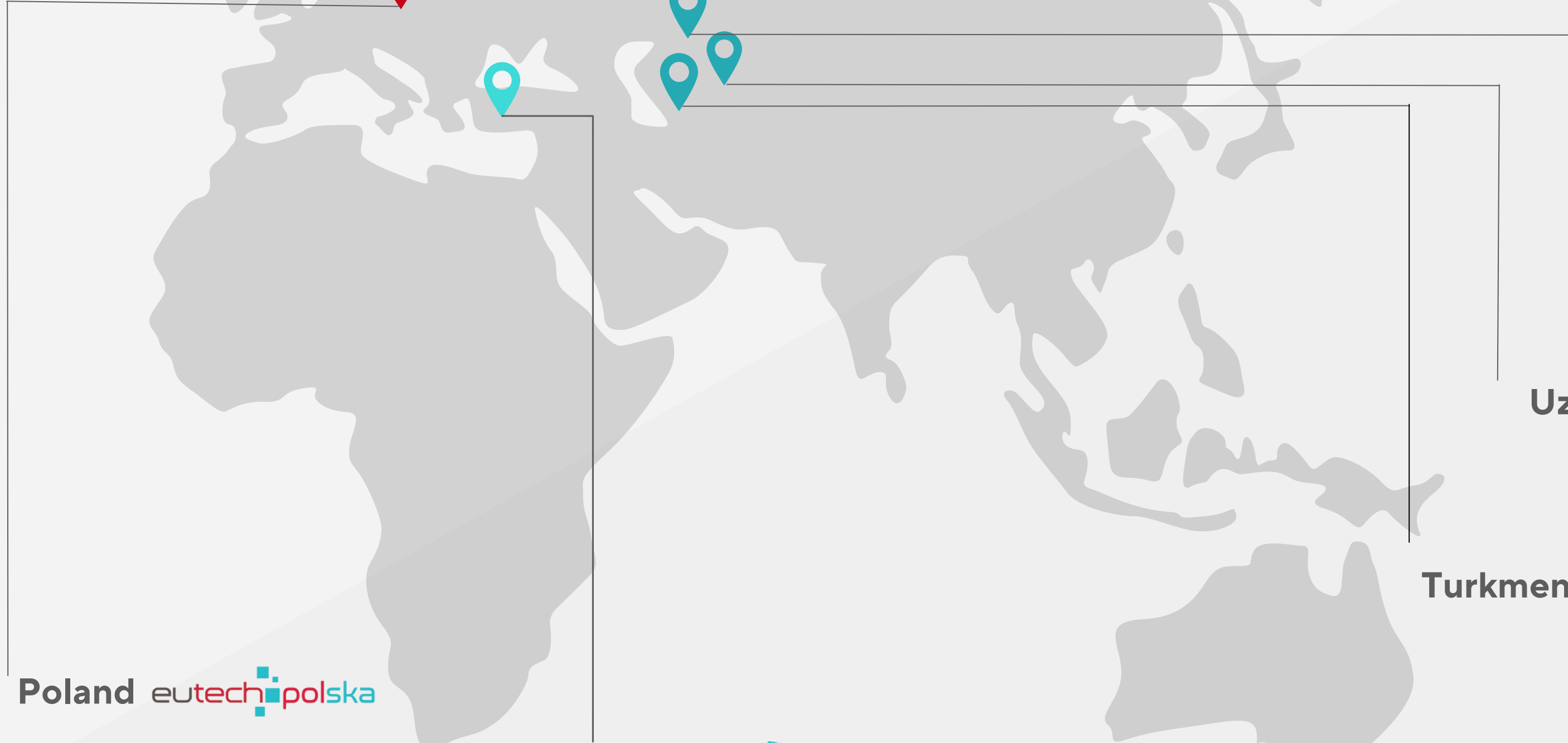


Growth and Institutionalization

Eutech relocated to its new facility in IMES to transform its expanding business volume into a sustainable and corporate entity, taking significant steps to strengthen its organizational structure.

SERVICED LOCATIONS



WORLD



Poland eutech  polska

Turkiye  INTELLIGENT FUTURE

Kazakhstan  DOĞALGAZ

Uzbekistan  DOĞALGAZ


Turkmenistan 

SERVICED LOCATIONS

TURKIYE



BOTAŞ



ENKA



OUR PARTNERSHIPS

As the exclusive distributor of Dräger and Karf & Scoot in the natural gas sector, Eutech also maintains strategic international partnerships with other leading manufacturing companies.



NATURAL GAS

OUR SERVICES

- ▶ **Design, Project Planning, and Manufacturing Processes:** We manage all stages of project planning and manufacturing, starting from engineering design, for natural gas projects both domestically and internationally. By designing practical, efficient, and reliable systems, we ensure the seamless execution of projects.
- ▶ **Installation and Commissioning Services:** We carry out the installation of flow computers, gas chromatographs, flow meters, and other measurement and control equipment. We ensure full system integration in the field and meticulously manage the commissioning processes.
- ▶ **Electrical and Automation Field Applications:** We design and implement the entire electrical and automation infrastructure, including wiring, grounding, lighting, and control panel installation, for natural gas facilities. By developing energy-efficient, long-lasting solutions tailored to every budgets, we ensure the safe and efficient operation of these facilities.
- ▶ **SCADA Systems and Data Management:** We design central and local SCADA systems for natural gas stations using the latest technology. These systems enable real-time data monitoring, automated control, measurement, reporting, and remote access. By enhancing operational efficiency, we accelerate fault detection and optimize energy management.
- ▶ **Turnkey Projects for LNG Facilities:** We manage electrical and automation projects for LNG facilities from start to finish, ensuring the complete execution of all installation and commissioning processes. By designing compact, plug-and-play stations, we enable our customers to start operations quickly and seamlessly.



NATURAL GAS OUR PRODUCTS

- ▶ Fixed Gas Detector
- ▶ Portable Gas Detector
- ▶ Flame Detector
- ▶ Modulo by Uestco
- ▶ Custody Transfer Software



Karf & Scoot GDSFX
Ex Fixed Gas Detector



Dräger PIR 3000
Ex Fixed Gas Detector

Exclusive Authorized Distributor in the Industry

**KARF &
SCOOT**

Dräger

NATURAL GAS OUR PRODUCTS

- ▶ Fixed Gas Detector
- ▶ **Portable Gas Detector**
- ▶ Flame Detector
- ▶ Modulo by Uestco
- ▶ Custody Transfer Software



BELLMINI GDI Portable Gas Detector



DRAGER X-AM 8000 Portable Gas Detector

Exclusive Authorized Distributor in the Industry

**KARF &
SCOOT**

Dräger

NATURAL GAS OUR PRODUCTS

- ▶ Fixed Gas Detector
- ▶ Portable Gas Detector
- ▶ **Flame Detector**
- ▶ Modulo by Uestco
- ▶ Custody Transfer Software



Karf & Scoot IRT-021-A Ex Flame Detector



Dräger ExFlame Detector 1500 (IR3)

Exclusive Authorized Distributor in the Industry

**KARF &
SCOOT**

Dräger

NATURAL GAS OUR PRODUCTS

Fully Compact LNG Refueling Stations

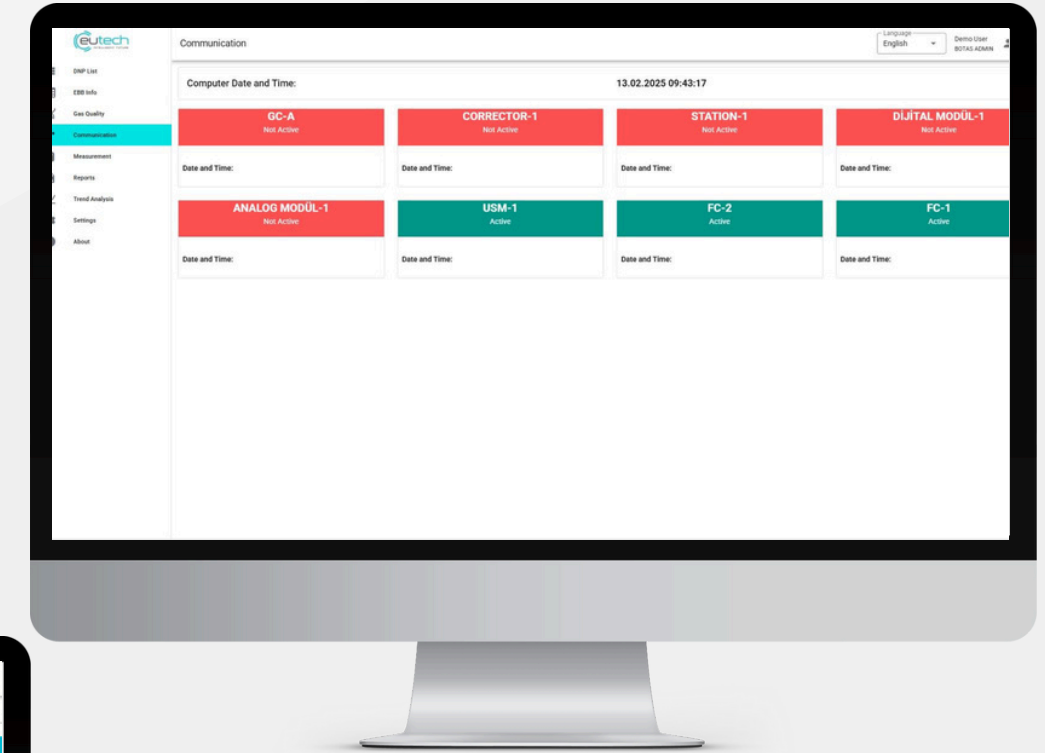
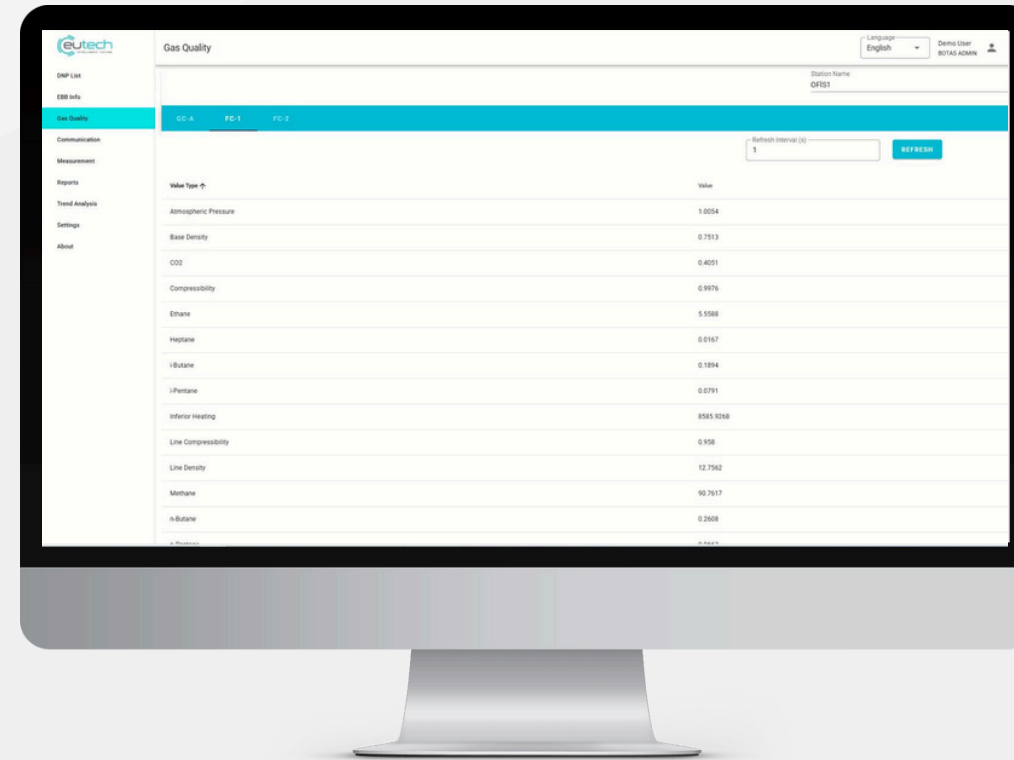
- ▶ Fixed Gas Detector
- ▶ Portable Gas Detector
- ▶ Flame Detector
- ▶ **Modulo by Uestco**
- ▶ Custody Transfer Software



- Plug & Play solution
- Portable
- Compact-Sized
- 28 m³ Insulated LNG Storage Tank
- Fast and Safe Installation

NATURAL GAS OUR PRODUCTS

- ▶ Fixed Gas Detector
- ▶ Portable Gas Detector
- ▶ Flame Detector
- ▶ Modulo by Uestco
- ▶ Custody Transfer Software



ELECTRICITY

OUR SERVICES

- ▶ **Design and Project Planning:** We carry out the engineering design of electrical systems for projects both domestically and internationally. By developing safe, efficient, and sustainable solutions, we create practical and applicable projects for the field.
- ▶ **Manufacturing:** We manage the manufacturing processes of electrical panels, wiring systems, energy distribution equipment, and automation solutions. Our high-quality, durable solutions comply with international standards, ensuring reliability and long-term performance.
- ▶ **Field Applications:** We implement energy infrastructure, lighting systems, control panel installation, and all electrical installation works in the field. We offer safe and optimized solutions, including grounding and protection systems.
- ▶ **Commissioning and Software:** We complete the commissioning of electrical systems and integrate automation through SCADA and remote monitoring systems. Additionally, we develop software solutions for energy management.
- ▶ **Maintenance and Support Services:** We provide periodic maintenance, fault detection, and troubleshooting services for electrical systems. Through predictive maintenance solutions, we ensure uninterrupted and secure facility operations, minimizing downtime and optimizing performance.



ELECTRICITY

OUR SERVICES

Through our **Schneider Electric EcoXpert** partnership, we offer energy monitoring and automation solutions to enhance business efficiency. By implementing load distribution and automation projects with SCADA systems, we help facilities optimize energy use, improve operational safety, and ensure continuous energy management.



ELECTRICITY

OUR PRODUCTS



- ▶ **Uninterruptible Power Supply**
- ▶ Industrial Automation Products
- ▶ Energy Monitoring Software



Microprocessor Controlled
Battery Charger Rectifier
-SS ICR



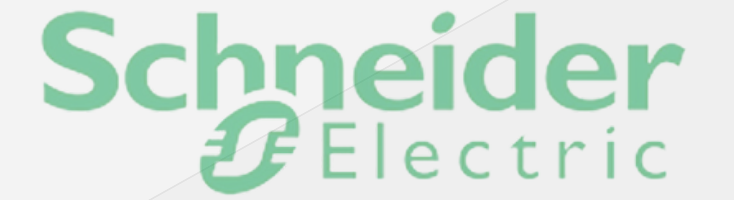
KEOR HP 60 - 800kVA UPS



DSP FLEXiPOWER
3-10 KVA UPS

ELECTRICITY

OUR PRODUCTS



- ▶ Uninterruptible Power Supply
- ▶ **Industrial Automation Products**
- ▶ Energy Monitoring Software



Modicon M580 SIL 3 PLC



Modicon M340 PLC



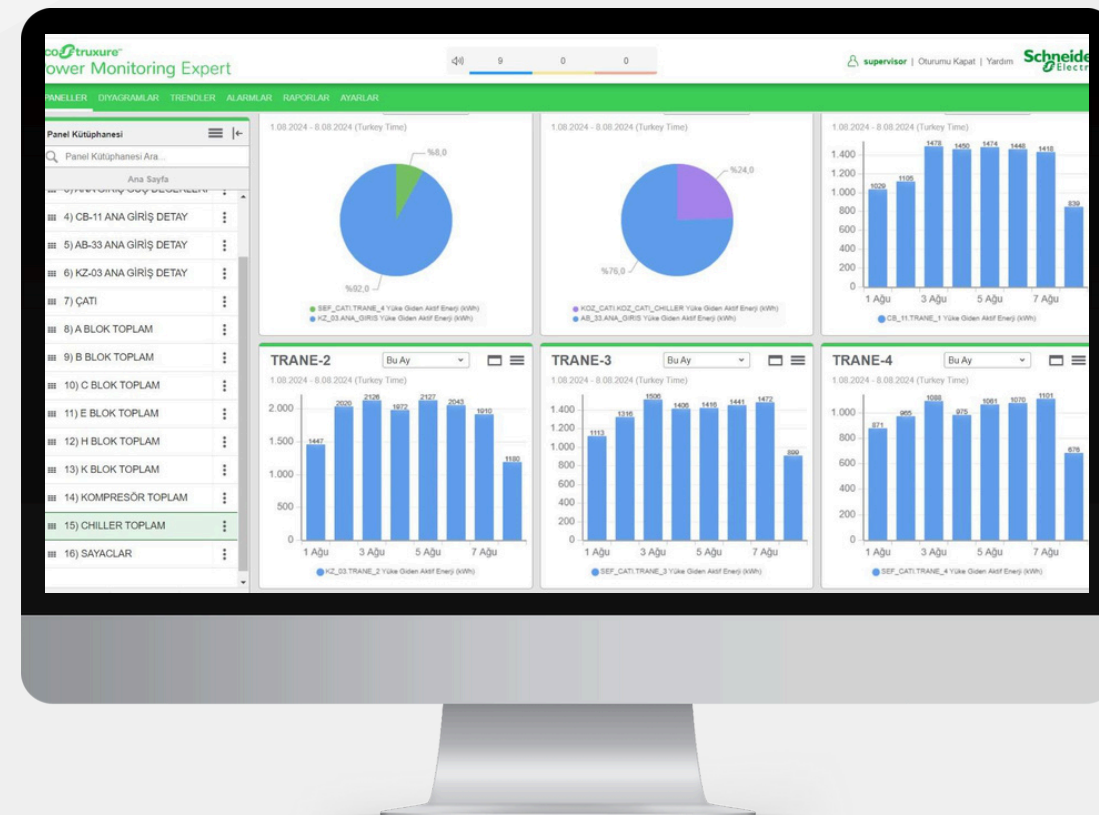
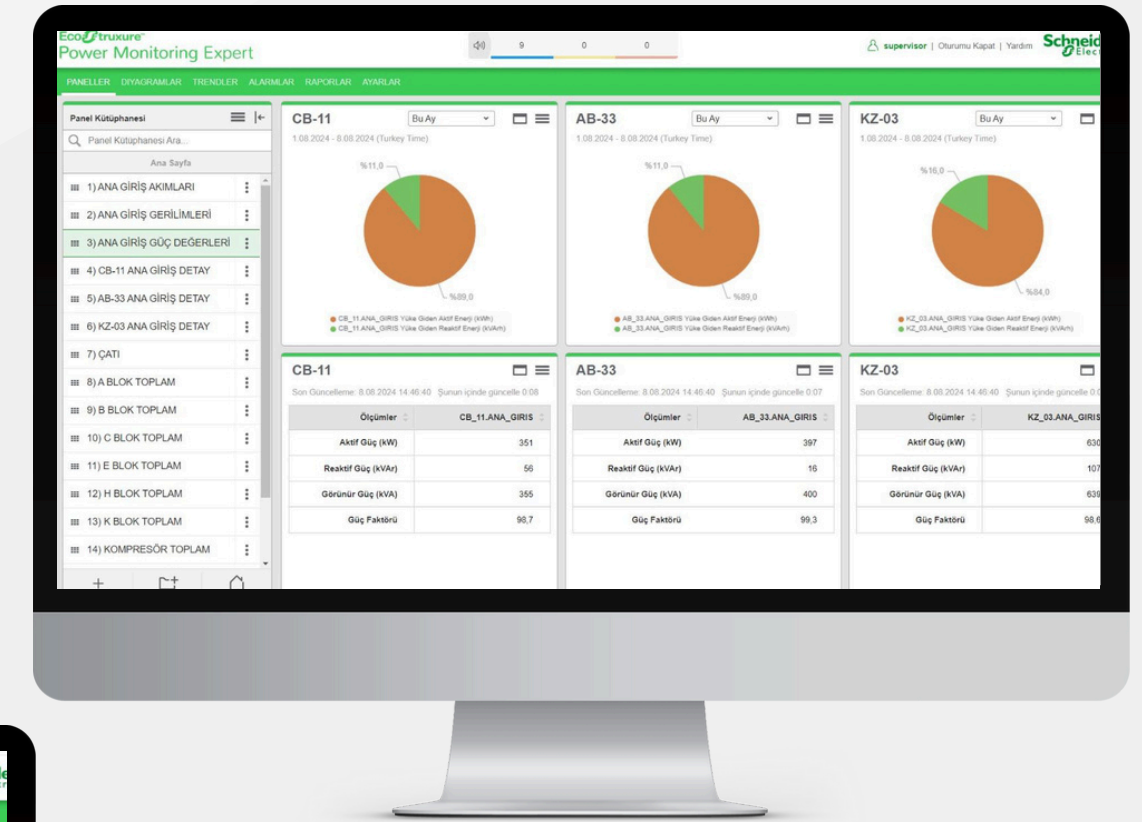
Altivar ATV320 Compact Driver

ELECTRICITY

OUR PRODUCTS



- ▶ Uninterruptible Power Supply
- ▶ Industrial Automation Products
- ▶ Energy Monitoring Software



THANK YOU!



İmes Sanayi Sitesi A Blok, 104.
Sk. No :35. Ümraniye/ İstanbul



+90 (216) 466 69 09



www.eutech.com.tr



info@eutech.com.tr